



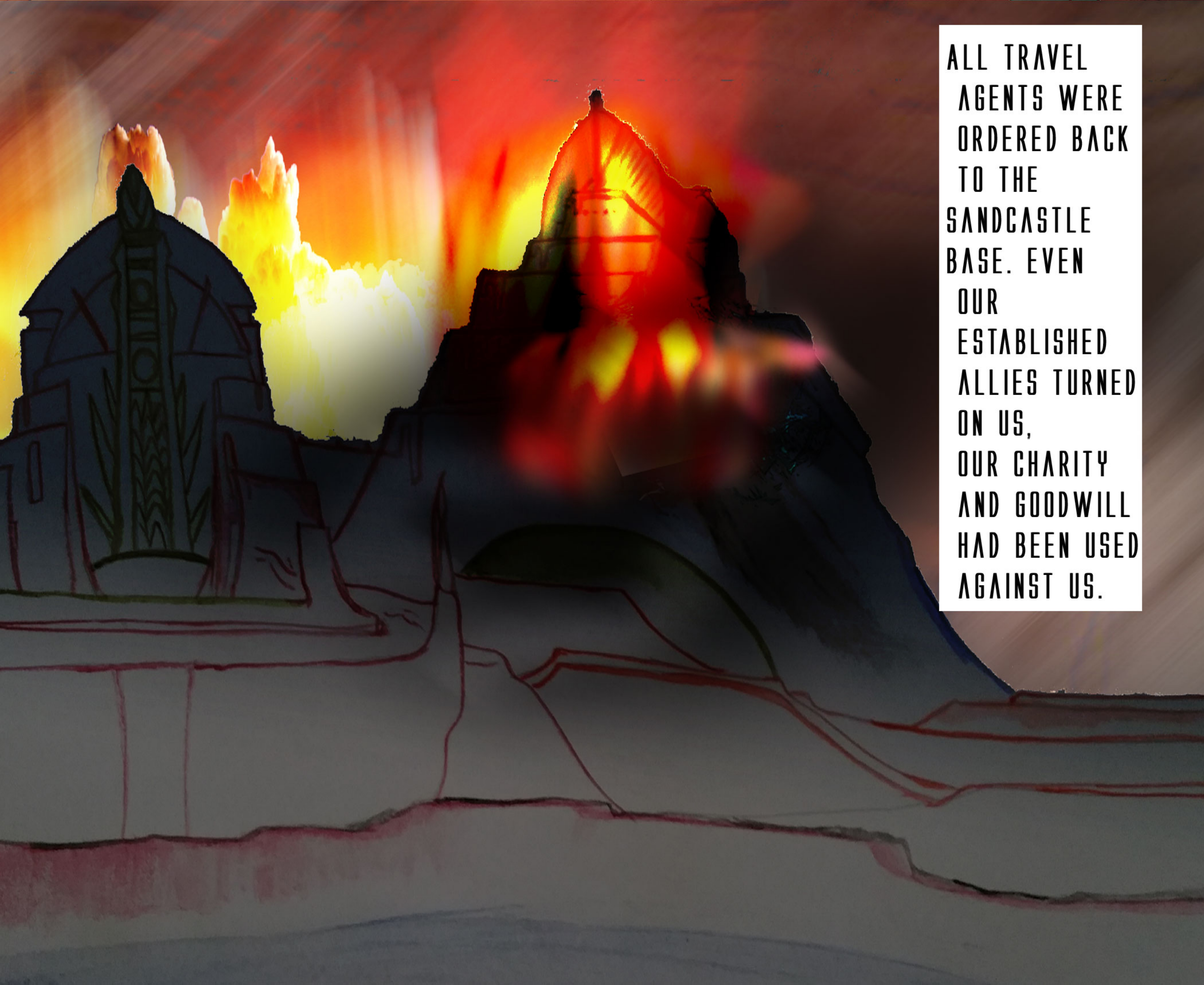
Fugitive Faction

CROSS WORLDS NEXUS © 2023 SHANE RONZIO www.crossworldsnexus.com © 2023 SHANE RONZIO [WWW.SHANERONZIO.COM](http://www.shaneronzio.com)





THE EXCLUSIVE ZONE BROKE OUT INTO RIOTS.



**ALL TRAVEL
AGENTS WERE
ORDERED BACK
TO THE
SANDCASTLE
BASE. EVEN
OUR
ESTABLISHED
ALLIES TURNED
ON US,
OUR CHARITY
AND GOODWILL
HAD BEEN USED
AGAINST US.**



I hate wizards.



I won't let our agents fall to this madness.



We are abandoning Wyzardlund.



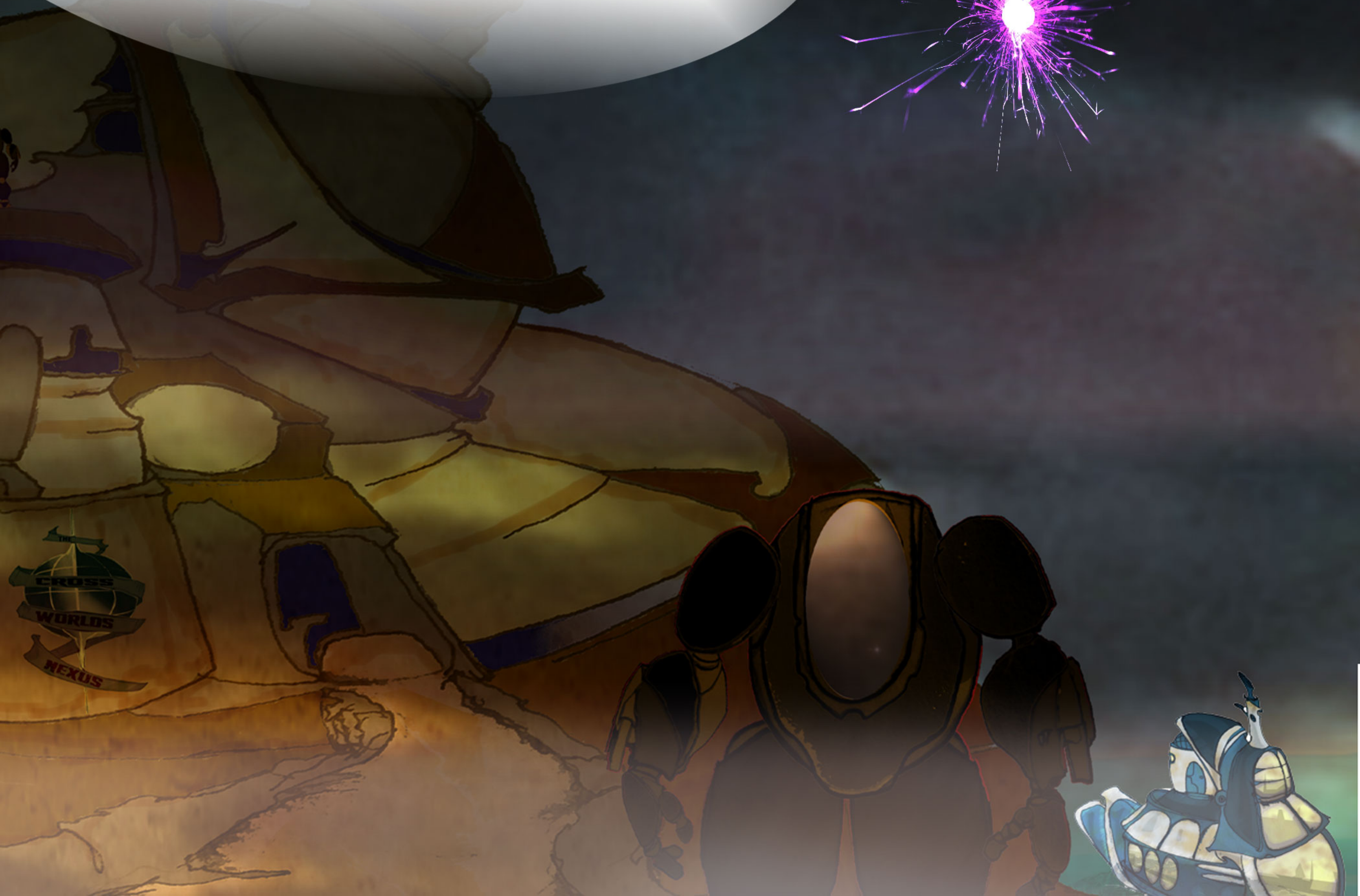
**IN ORDER FOR US TO SAFELY
EVACUATE, WE MUST ESTABLISH
A PERIMETER AROUND THE
SANDCASTLE BASE AND CREATE
AN EXTRACTION PORTAL.**

**We never should have involved ourselves in these foreign
entanglements...Wyzardlund has always been hostile territory
for our cohorts. They have always been unreasonable.**

THE FOG OF WAR SHROUDS ALL.



OUT OF THE HEAVENS.
HIGH ABOVE THE SANDCASTLE BASE...
THE ILLUMINATED SPHERE DESCENDS.





Your kind has
mettled in my
realm for the
Last Time!

Now taste my Wrath!



TRANSMISSION LOST



TRANSMISSION LOST



Time to get to work.

GAME ON.



TRANSMISSION LOST

**I SHOULD
HAVE NEVER
TAKEN THAT
DAY OFF!**



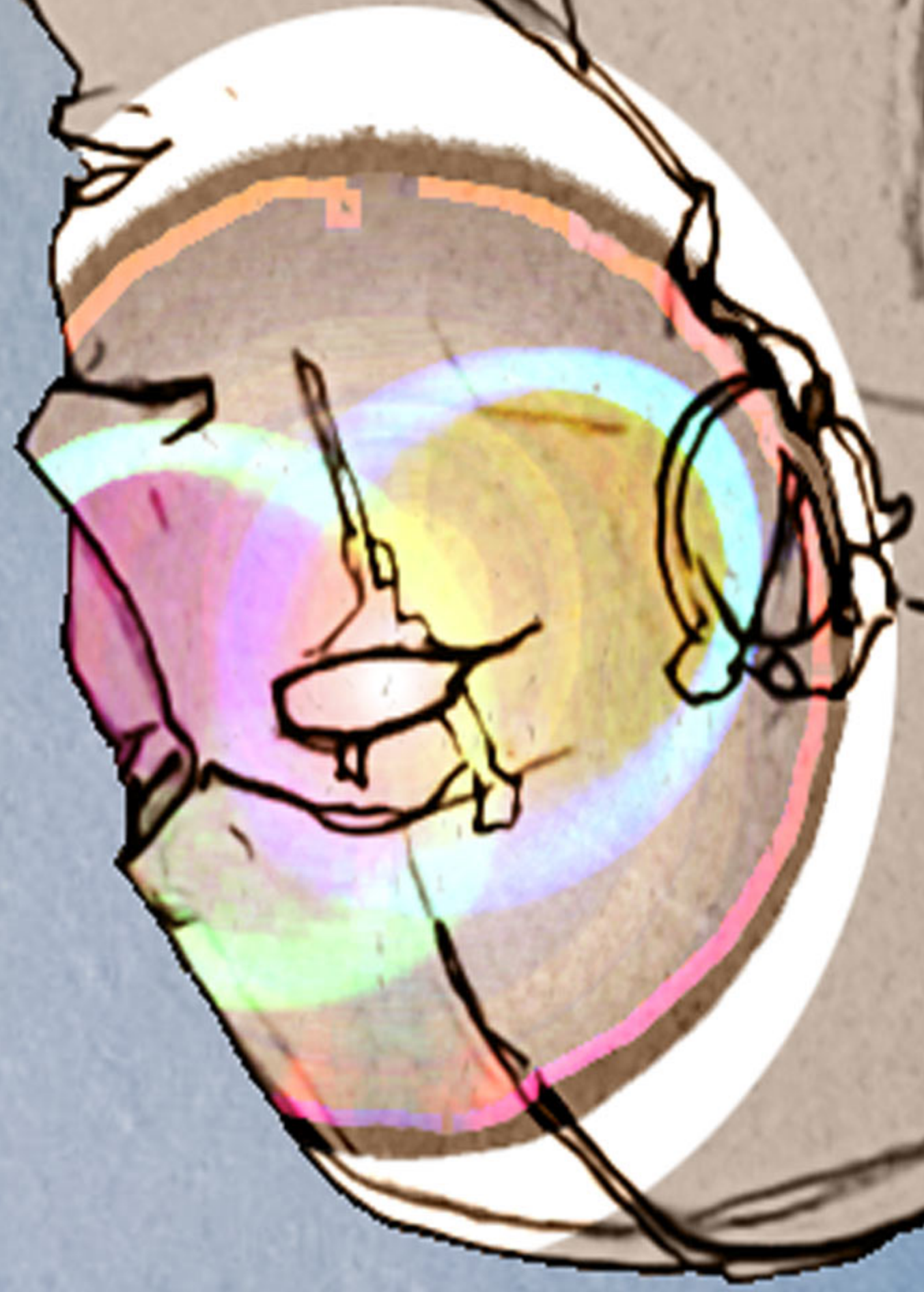
DAMN.



TO BE CONTINUED...

TO BE CONTINUED...

THAT WOULD PROVE TO BE
UNWISE. YOU'LL ACTIVATE
THE PHOTON GRID.



SAY, HOW'S ABOUT I FLY UP AND GET A BIRD'S
EYE VIEW OF THE AREA AND SEE IF WE CAN
SPOT OUR OLD CHUMS LOCATION?



WHICH MOON? AMERICANS?

KNOWING GOLD TALON, BY NOW, HE HAS FOUND HIMSELF A PRIME PIECE OF REAL ESTATE, AND IS LIVING OFF THE LAND LIKE THE CHIEF THAT HE IS.

I'M PRETTY SURE THAT HE WOULDN'T LIKE THIS PLACE, IN THE WORLD WARS, GOLD TALON WAS THE MAIN PROTECTOR OF THE HOME LAND.



IT'S A SHAME ABOUT THE WORLD WARS, EARTH LOST! THE JUPITER MOON ALLIANCE, AND THE VENUS SYNDICATE WERENT ABLE TO KEEP WARS IN CHECK. IT IS A MESS OUT THERE... NOT SO MUCH BETTER DOWN HERE, THOUGH...





YES, MISS MAXXINE, WE WOULD ALL LIKE FOR THAT TO HAPPEN.



PROFESSOR RIVERCROW,
I'D REALLY JUST LIKE
TO RESCUE OUR FRIEND,
GOLD TALON.



WELL...IT'S DEFINITELY NOT NEVERDA.

WILL THERE BE ANY MORE STRANGE GIANT MACHINES TO DESTROY, THAT WAS A RATHER REFRESHING CHANGE OF PACE!

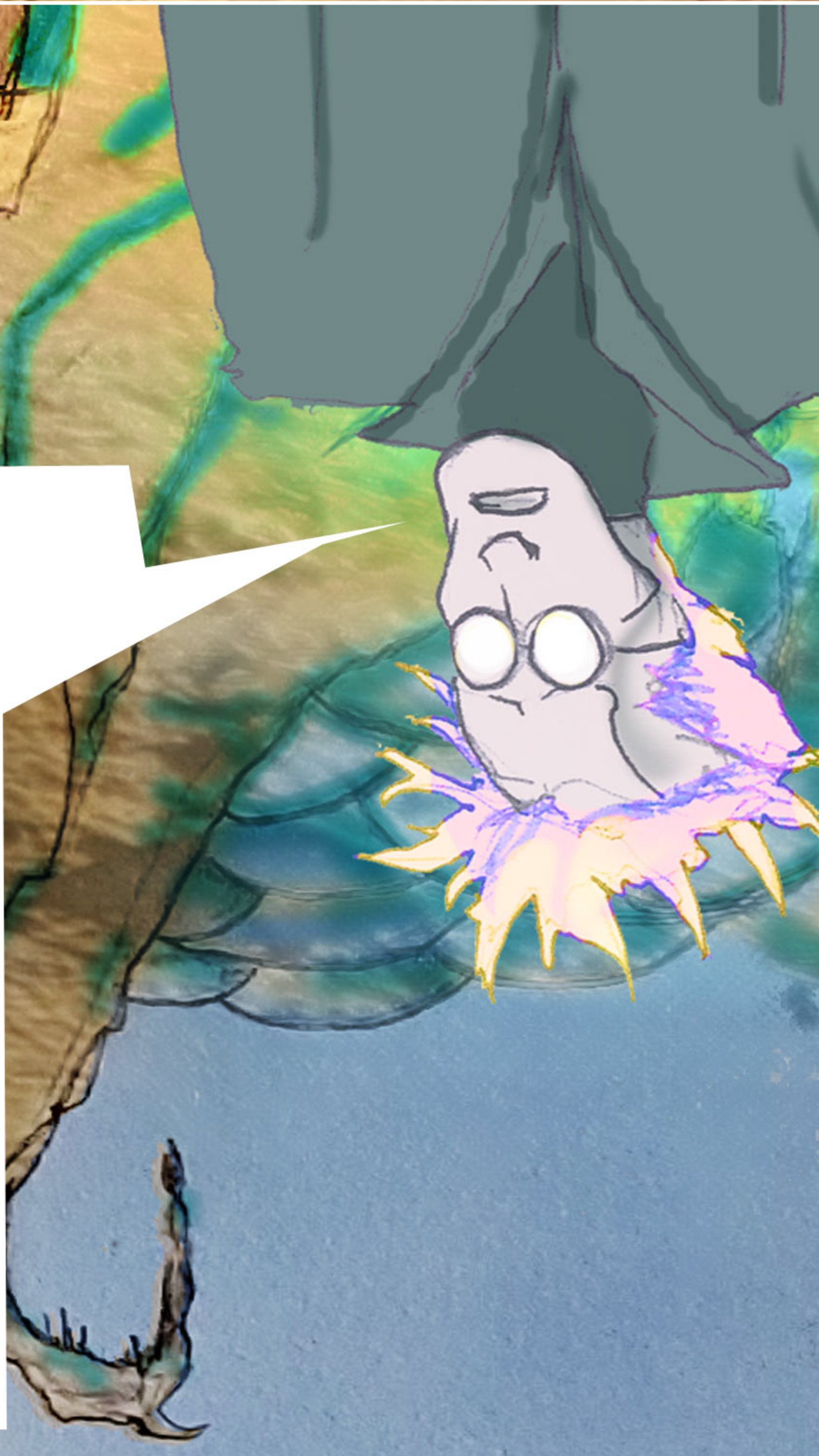


THAT SOUNDS CHARMING.

WE ARE JUST OUTSIDE
THE LOST METROPOLIS
OF STEMFALUR.



I KNOW THAT IT SEEMS FAR
FETCHED, BUT IT COULD BE
POSSIBLE.
I KNOW THAT THIS IS THE PROPER
LOCATION.
THAT IS WHY WE WENT HERE AFTER
WE ACTIVATED THE DEVICE AT THE
TESTING FACILITY.
I JUST DONT KNOW
WHERE HERE IS?





I AM SURE OF IT.
MY MATHEMATICAL EQUATIONS INDICATE
THAT WE ARE ABSOLUTELY IN THE
PROPER AREA.
AS I TOLD YOU BEFORE THIS IS NOT
AN EXACT SCIENCE, WE ARE STANDING
FIRMLY INSIDE THE FRONTIER OF A
TECHNOLOGICAL ADVANCEMENT
THAT THE WORLD HAS EVER KNOWN...
THIS TECHNOLOGY COULD
LAND AN AMERICAN
ON THE MOON
SOMEDAY!



LOOK, I KNOW THAT WE ARE IN THE DIRECT
VICINITY OF THE LOCATION OF GOLD TALON.



FOR DOCTOR LIE, OUR
MAGNIFICENT SCIENTIST...
IS PROGRESSING QUICKLY
WITH THE NEW EXPERIMENT.



WORRY NOT...

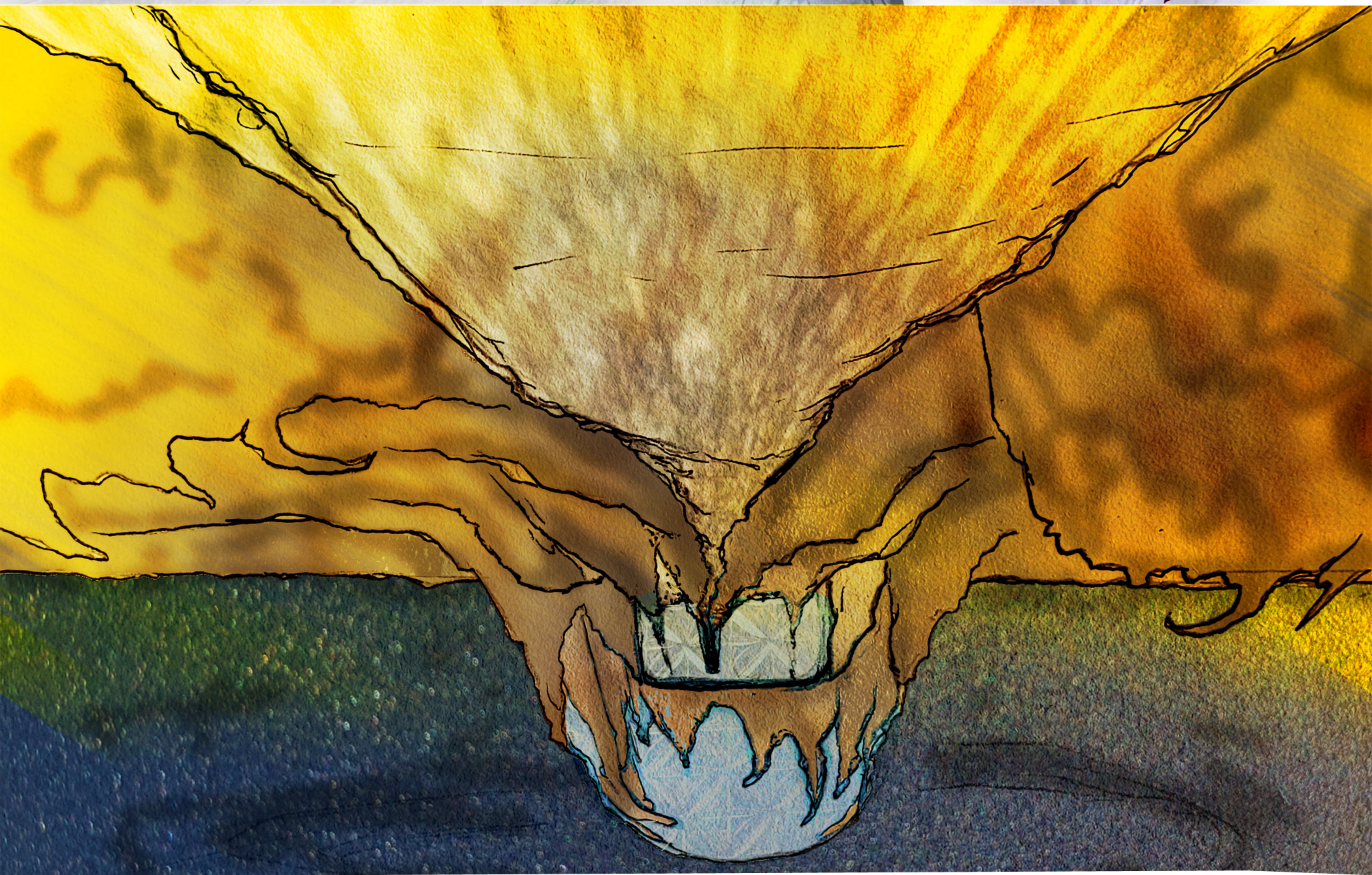


THEY DESTROYED
THE LEVIATHAN WITH EASE,
THESE STRANGERS.
THEY MUST BE ERADICATED!



DEEP WITHIN THE CAVERNUS INNER WORKINGS,
THE LEADERS OF THIS DARK PLACE OBSERVE THE
OUTSIDE WORLD AND EXAMINE AND PREPARE FOR
ANY POTENTIAL THREATS.

THE BROKEN CLOKWERX NODE, ONCE A TRIUMPHANT
EXAMPLE OF A LONG LOST GOLDEN AGE...



...NOW NOTHING MORE THAN
A COLLECTION OF MONSTROSITIES.



LIBRARY

OF

HERBES